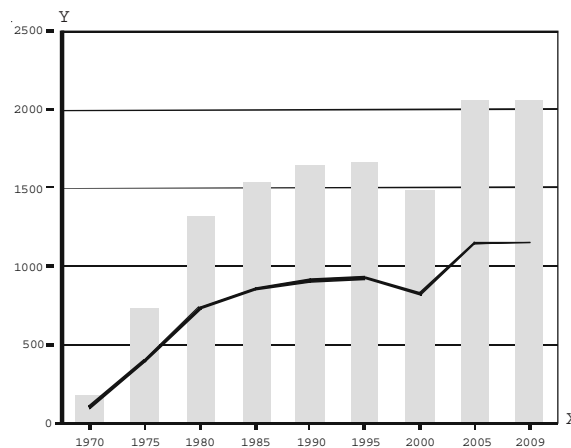


VPM's (Thane) Group of Institutions
Nos. of Students and Indexed Growth Quinquennial Basis (Except 2009)
B.N. Bandodkar College of Science

TABLE - 1C

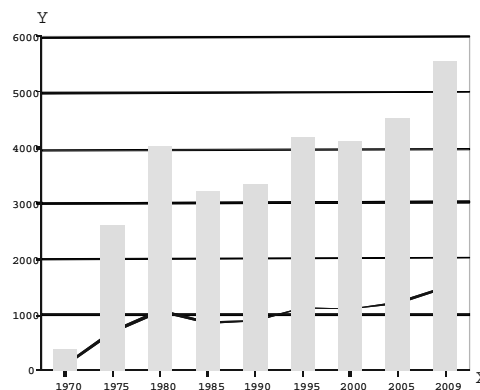
Year	1970	1975	1980	1985	1990	1995	2000	2005	2009
Nos. of Students	180	725	1323	1535	1639	1667	1490	2061	2068
Index Number	100	403	735	853	911	926	828	1145	1149



K.G. Joshi College of Arts and N.G. Bedekar College of Commerce

TABLE - 1D

Year	1970	1975	1980	1985	1990	1995	2000	2005	2009
Nos. of Students	371	2617	4008	3209	3356	4190	4125	4516	5539
Index Number	100	705	1080	865	905	1129	1112	1217	1493



X Axis - Years Y Axis - Nos. of Students and Indexed growth

* Indexed Growth is calculated using the year of inception as the base year, which is equal to 100.

Line Graphs represent Index number. Bar graphs represent Nos. of students

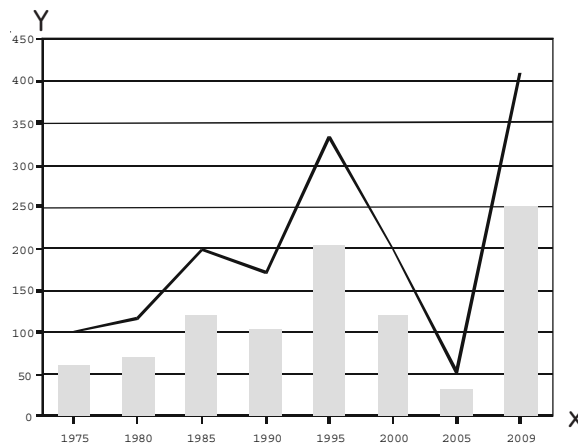
VPM's (Thane) Group of Institutions

Nos. of Students and Indexed Growth Quinquennial Basis (Except 2009)

Dr. V. N. Bedekar Institute of Management Studies

TABLE - 1E

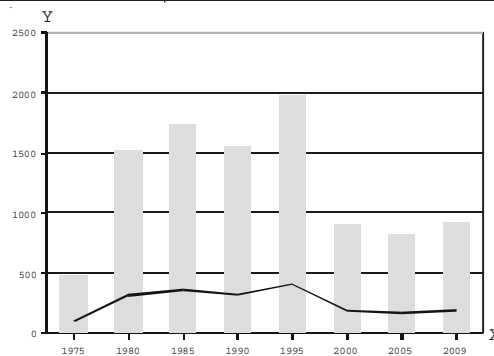
Year	1975	1980	1985	1990	1995	2000	2005	2009
Nos. of Students	61	71	121	104	204	121	32	250
Index Number	100	116	198	171	334	198	52	410



VPM's Thane Municipal Corporation Law College

TABLE - 1F

Year	1975	1980	1985	1990	1995	2000	2005	2009
Nos. of Students	481	1525	1732	1555	1975	902	826	920
Index Number	100	317	360	323	411	188	172	191



X Axis - Years Y Axis - Nos. of Students and Indexed growth

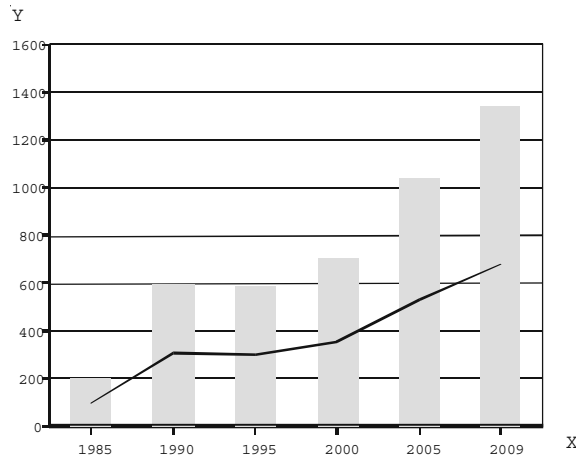
* Indexed Growth is calculated using the year of inception as the base year, which is equal to 100.

Line Graphs represent Index number. Bar graphs represent Nos. of students

VPM's (Thane) Group of Institutions
Nos. of Students and Indexed Growth Quinquennial Basis (Except 2009)
Polytechnic (including IT centre)

TABLE - 1G

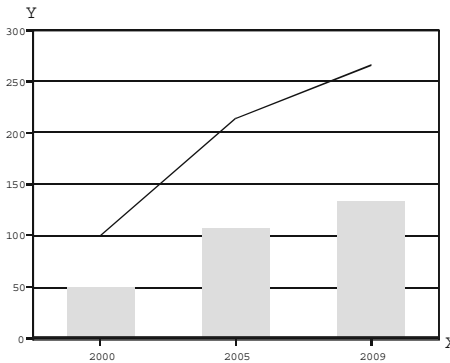
Year	1985	1990	1995	2000	2005	2009
Nos. of Students	198	598	590	707	1043	1344
Index Number	100	302	298	357	527	679



Advanced Study Centre

TABLE - 1H

Year	2000	2005	2009
Nos. of Students	50	107	133
Index Number	100	214	266



X Axis - Years Y Axis - Nos. of Students and Indexed growth

* Indexed Growth is calculated using the year of inception as the base year, which is equal to 100.

Line Graphs represent Index number. Bar graphs represent Nos. of students

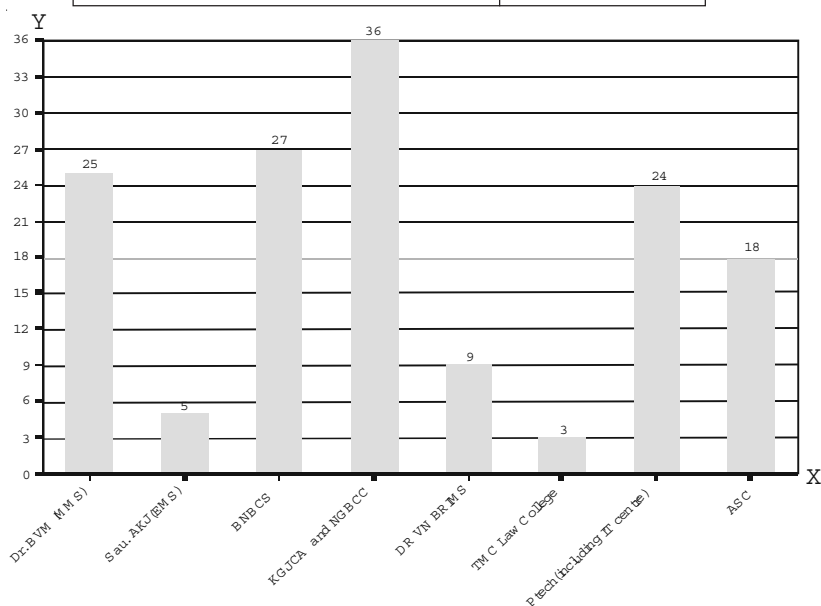
VPM's (Thane) Group of Institutions
Nos. of Students and Indexed Growth Quinquennial Basis
(Except 2009)

This graph represents average* growth of students in percent per annum during the tenure of the respective institutions based on Table 1- Column 20

Table 1- Column 20

TABLE – 2

Institution	Average*
Dr. BVM (MMS)	25
Sou. AKJ(EMS)	5
BNBCS	27
KGJCA and NGBCC	36
DR VN BRIMS	9
TMC Law College	3
Ptech(including IT centre)	24
ASC	18



X Axis – Name of the Institutions

Y Axis - Average growth of students in percent per annum

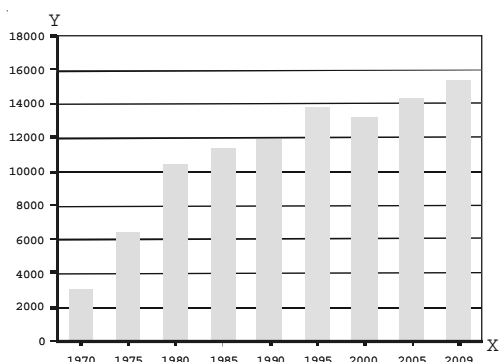
* Indexed Growth is calculated using the year of inception as the base year, which is equal to 100.

Bar graph represents Nos. of students

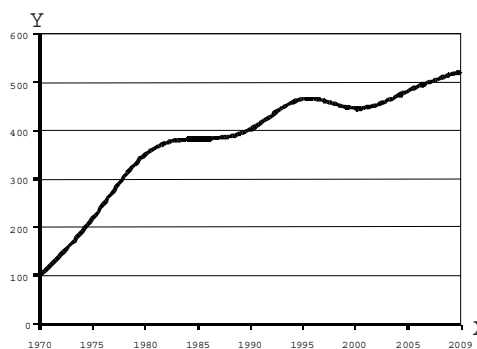
VPM's (Thane) Group of Institutions
All Institutions - Nos. of Students -Quinquennial basis
(Except 2009)

TABLE – 3

Year	Nos. of Students	Index Number
1970	2958	100
1975	6440	218
1980	10392	351
1985	11319	383
1990	11916	403
1995	13777	466
2000	13180	446
2005	14283	483
2009	15447	522



X Axis - Years
Y Axis - Nos. of Students

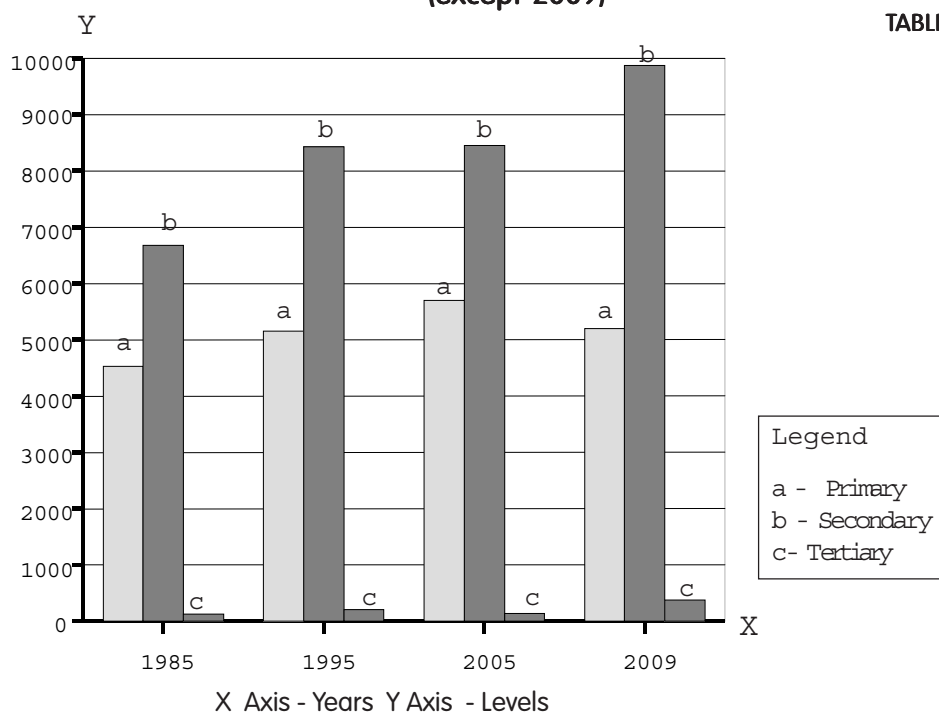


X Axis - Years
Y Axis - Indexed Growth

Line Graph represents Index number. Bar graph represents Nos. of students

VPM's (Thane) Group of Institutions
Nos. of Students -Primary/Secondary/Tertiary Levels
1985- 2009 – Decennial Basis
(except 2009)

TABLE – 4



		Years			
Category	Institution	1985	1995	2005	2009
Primary Level (Schools)	Dr. BVM Marathi Med School	3090	3271	3434	3423
	Sou. AKJ Eng Med School	1434	1880	2264	1770
	Primary Level Total	4524	5151	5698	5193
Secondary Level (Colleges & Polytechnic)	BNB College of Science	1535	1667	2061	2068
	KGJ College of Arts and Commerce	3209	4190	4516	5539
	Polytechnic (Including IT Centre)	198	590	1043	1344
	TMC Law College	1732	1975	826	920
	Secondary Level Total	6674	8422	8446	9871
Tertiary Level (DR VN BRIMS & ASC)	DR VN BRIMS	121	204	32	250
	ASC	0	0	107	133
	Tertiary Level Total	121	204	139	383
	GRAND TOTAL	11319	13777	14283	15447

VIDYA PRASARAK MANDAL THANE

(ESTD . 1-8-1935)

Trustees

Dr . V . V . Bedekar

Shri S. K. Joshi

Shri H.T. Thanawala

Shri S.V. Vengurlekar

Managing Committee

Dr . V . V . Bedekar

Chairman

Shri . M . Y . Gokhale

Treasurer

Shri . U . B . Joshi

Secretary

Shri . J . N . Kayal

Joint Secretary

Shri . M . N . Patil

Member

Shri . S . V . Karandikar

Member

Shri . D . G . Joshi

Member

Dr . A . N . Bapat

Member

Mrs . A . A . Bapat

Member

Shri . A . C . Joshi

Member

Dr . M . V . Bedekar

Member