

VPM's (Thane)
Group of Institutions
A Statistical Profile
(1935-2009)

List of Tables

Table 1A	Nos. of students and Indexed Growth Quinquennial Basis (Except 2009) Dr. Bedekar Vidya Mandir (Marathi Medium School)
Table 1B	Nos. of students and Indexed Growth Quinquennial Basis (Except 2009) Sou. A.K. Joshi English Medium School
Table 1C	Nos. of students and Indexed Growth Quinquennial Basis (Except 2009) B.N. Bandodkar College of Science
Table 1D	Nos. of students and Indexed Growth Quinquennial Basis (Except 2009) K.G. Joshi College of Arts and N.G.Bedekar College of Commerce
Table 1E	Nos. of students and Indexed Growth Quinquennial Basis (Except 2009) Dr. V. N. Bedekar Institute of Management Studies
Table 1F	Nos. of students and Indexed Growth Quinquennial Basis (Except 2009) Thane Municipal Corporation Law College
Table 1G	Nos. of students and Indexed Growth Quinquennial Basis (Except 2009) Polytechnic (including IT centre)
Table 1H	Nos. of students and Indexed Growth Quinquennial Basis (Except 2009) Advanced Study Centre
Table 2	Nos.of Students and Indexed Growth Quinquennial basis (Except 2009)
Table 3	Nos. of Students –All Institutions Quinquennial Basis (Except 2009)
Table 4	Nos. of Students -Primary/Secondary/Tertiary Levels Decennial Basis (Except 2009)

1	2	3	4	5	6	7	8	9	10	11	12	13	14	15	16	17	18	19	20
Institution	Year	1935	1940	1945	1950	1955	1960	1965	1970	1975	1980	1985	1990	1995	2000	2005	2009	Age (Years)	Average Growth
Dr. BVM(MMS) 1935	Nos. of Students	174	126	189	243	577	883	2400	2407	2556	2699	3090	3139	3271	3553	3434	3423	74	25
	Index Number	100	72	109	140	332	507	1379	1383	1469	1551	1776	1804	1880	2042	1974	1967		
BNECS 1969	Nos. of Students								180	725	1323	1535	1639	1667	1490	2061	2068	39	27
	Index Number								100	403	735	853	911	926	828	1145	1149		
KGJCA and NGBCC 1969	Nos. of Students								371	2617	4008	3209	3356	4190	4125	4516	5539	39	36
	Index Number								100	705	1080	865	905	1129	1112	1217	1493		
TMC.LC 1972	Nos. of Students									481	1525	1732	1555	1975	902	826	920	34	3
	Index Number									100	317	360	323	411	188	172	191		
DR.VN BRIMS 1973	Nos. of Students									61	71	121	104	204	121	32	250	34	9
	Index Number									100	116	198	171	334	198	52	410		
Sau. AKJ (EMS) 1976	Nos. of Students										766	1434	1565	1880	2232	2264	1770	29	5
	Index Number										100	187	204	245	291	296	231		
PTECH(inc luding IT centre) 1983	Nos. of Students											198	598	590	707	1043	1344	24	24
	Index Number											100	302	298	357	527	679		
ASC 1996	Nos. of Students														50	107	133	9	18
	Index Number														100	214	266		



VPM's (Thane)
Group of
Institutions
1935 - 2009

Numbers of Students
and
Indexed Growth
Quinquennial Basis

N.B. : 1. Indexed Growth is calculated using the year of inception as the base year , which is equal to 100. Index number for any year is computed as follows :

$$\left[\frac{\text{Number of students in the year for which Index is calculated for the respective institution}}{\text{Number of students in base year i.e. year of inception for the respective institution}} \times 100 \right]$$

2. Index Number Column 20 - indicates the average growth rate of students, in percent per annum, for the respective institutions since inception.

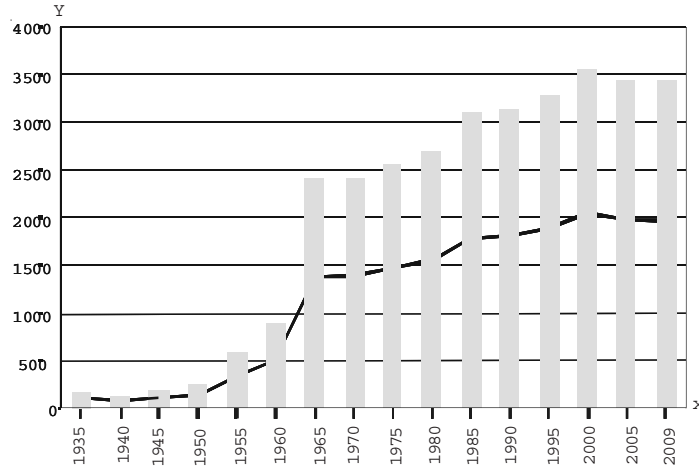
3. Index Number Column 20 is computed as follows :

$$\frac{\text{Index Number for the respective institutions in 2009 minus 100}}{\text{Number of years since establishment of the respective institutions}}$$

VPM's (Thane) Group of Institutions
Nos. of Students and Indexed Growth Quinquennial Basis (Except 2009)
Dr. Bedekar Vidya Mandir (Marathi Medium School)

TABLE - 1A

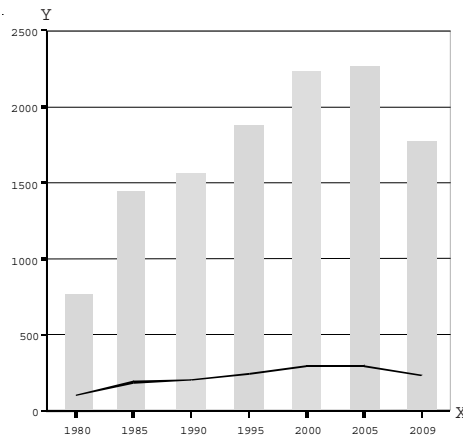
Year	1935	1940	1945	1950	1955	1960	1965	1970	1975	1980	1985	1990	1995	2000	2005	2009
Nos. of Students	174	126	189	243	577	883	2400	2407	2556	2699	3090	3139	3271	3553	3434	3423
Index Number	100	72	109	140	332	507	1379	1383	1469	1551	1776	1804	1880	2042	1974	1967



Sou. A.K. Joshi English Medium School

TABLE - 1B

Year	1980	1985	1990	1995	2000	2005	2009
Nos. of Students	766	1434	1565	1880	2232	2264	1770
Index Number	100	187	204	245	291	296	231



X Axis - Years

Y Axis - Nos. of Students and Indexed growth

* Indexed Growth is calculated using the year of inception as the base year, which is equal to 100.

Line Graphs represent Index number. Bar graphs represent Nos. of students