

VPM's Group of Institutions subscribes to online, national and international, databases like JSTOR, CMIE, ERIC, Cochran, E-Library, Manupatra, Dictionary of Scientific Biography, Athens and others. All the libraries of VPM's Thane college campus are well equipped with national and international journals and are inter-connected with the library software LibSuite.

An overview of different databases and their features is presented below

**INTERNET ACCESS & ON-LINE MATERIAL  
AVAILABLE ON VPM'S (Thane) website**

SR NO.	NAME OF DATABASE	FEATURES OF DATABASE
1	Open J-Gate [Open Access Journal Gateway] <a href="http://www.openj-gate.com/">http://www.openj-gate.com/</a>	Open J-Gate is an electronic gateway to global journal literature in open access domain. Launched in 2006, Open J-Gate is the contribution of Informatics (India) Ltd to promote Open Application Integration.
2	DOAJ [Directory of Open Access Journals] <a href="http://www.doaj.org/">http://www.doaj.org/</a>	This service covers free, full text, quality controlled scientific and scholarly journals. We aim to cover all subjects and languages. There are now 2516 journals in the directory. Currently 749 journals can be tracked and traced for articles.
3	ERIC [Education Resources Information Center] <a href="http://www.eric.ed.gov/">http://www.eric.ed.gov/</a>	ERIC provides unlimited access to more than 1.2 million bibliographic records of journal articles and other education-related materials, with hundreds of new records added twice weekly. Links to full text are included wherever accessible.

4	OpenDOAR <a href="http://www.opendoar.org/search.php">http://www.opendoar.org/search.php</a>	Users of this service can search through the world's repositories of freely available research information with the assurance that each of these repositories has been assessed by OpenDOAR staff.
5	SSRN [Social Science Research Network] <a href="http://www.ssrn.com/">http://www.ssrn.com/</a>	Social Science Research Network (SSRN) is devoted to the rapid worldwide dissemination of social science research and comprises number of specialized research networks in each of the Social Science
6	SOSIG [Social Science Information Gateway] <a href="http://www.sosig.ac.uk/business">http://www.sosig.ac.uk/business</a>	The SOSIG Business and Management gateway provides free access to high quality resources on the Internet. Each resource has been evaluated and categorised by subject specialists include students, staff and researchers in higher and further education.
7	Pbs [Public Library of Science] <a href="http://www.pbs.org">www.pbs.org</a>	Pbs is a nonprofit organisation of scientists and physicians committed to making the world's scientific and medical literature a freely available public resource.
8	Vidyanidhi <a href="http://dspace.vidyanidhi.org.in:8080/dspace/">dspace.vidyanidhi.org.in : 8080/dspace/</a>	Vidyanidhi is India's premier Digital library initiative to facilitate the creation, archiving and assess of doctoral theses.

SR NO.	NAME OF DATABASE	FEATURES OF DATABASE
1	JSTOR Rhttp://www.jstor.org/?cookieSet=1	JSTOR is a not-for-profit organization dedicated to helping the scholarly community discover, use, and build upon a wide range of intellectual content in a trusted digital archive.
2	Manupatra http://www.manupatra.com/	Manupatra is India's premier online research service for the legal community. It is an intelligent database for legal and corporate professionals. Researchers can access relevant information in a form and manner suiting their requirement
3	CMIE Prowess [Centre for Monitoring Indian Economy http://www.cmie.com/	Prowess is a database of over 10,000 Indian companies. It contains detailed normalised data culled from the audited annual accounts, stock exchanges, company announcements, etc. A ten years of time-series data is updated with the latest data on a daily basis. First Source is a database of over 250,000 companies.
4	ARTstor	ARTstor is a digital library of nearly one million images in the areas of art, architecture, the humanities, and social sciences with a set of tools to view, present, and manage images for research and pedagogical purposes.
5	ProQuest ABI/INFORM Dateline, ABI/INFORM Global, ABI/INFORM Trade & Industry http://proquest.umi.com	ProQuest is an information partner, creating indispensable, research solutions that connect people and information, through innovative, user-centered technology. ProQuest offers a depth and breadth of global content that includes historical newspapers, dissertations, and uniquely relevant resources for researchers
6	ATHENS (Eduserv-UK)	Athens is an Access Management System developed by Eduserv that simplifies access to the electronic resources that organisation has subscribed.
7	The Statesman's Yearbook Online	This site contain the full text of the current edition of The Stateman's Yearbook, regularly updated by our editorial team to reflect recent world events, with extensive search and browse facilities.
8	Dictionary of Scientific Biography	Gale®, a part of Cengage Learning, is a world leader in e-research and educational publishing for libraries, schools and businesses.

**[www.granthalaya.org](http://www.granthalaya.org)**

This is a project of Vidya Prasarak Mandal, Thane which intends to create bibliographic union database of holdings of all the public libraries in Konkan area including Thane. After completion, one would be in a position to know about the availability and location of the books in public libraries of Konkan area.

**JOOMLA**

<http://59.165.133.196:22222/joomla>

To Joomla! is an award-winning Content Management System (CMS) that helps one build websites and other powerful online applications. Best of all, Joomla! is an open source solution that is freely available to everybody.

[www.granthalaya.org](http://www.granthalaya.org)



**Dr. Bedekar Vidya Mandir  
Marathi Medium School**

Mahatma Phule Road,  
Off Gokhale Road, Naupada,  
Thane (West) - 400 602  
Maharashtra, India

Tel. : + 91-22-2542 1776  
E-mail : [vpmt\\_bedekar@gmail.com](mailto:vpmt_bedekar@gmail.com)  
Website : [www.vpmthane.org](http://www.vpmthane.org)

## VISION

All round personality development of students

## ABOUT THE SCHOOL

- ❑ Semi-English from KG to IX<sup>th</sup> Standards (five divisions each) and X<sup>th</sup> Standard (four divisions)
- ❑ Science and Mathematics are taught in English medium from VII<sup>th</sup> Standard onwards.
- ❑ Parent-teacher association
- ❑ Quality development programs for X<sup>th</sup> Standard students
- ❑ Number of students 3423 (2008-09)
- ❑ For Standard VIII optionals are between Sanskrit or Hindi
- ❑ Students of Standards VI to VIII can enrol as scouts (males) / guides (females)

## AFFILIATION

The school is affiliated to Maharashtra State Board for Secondary and Higher Secondary Education, Mumbai.

## CO-CURRICULAR ACTIVITIES

Various competitive exams are conducted by other institutions in the subjects of History, Marathi, Science, English, Sanskrit, Drawing and Ramayana.

## SALIENT FEATURES

National / State Level Scholarships and Talent Search Examinations.

- ❑ **PROGRAMS** :- newsletter, social gathering, inter-school competition and annual gathering.



**Sou. Anandibai Keshav Joshi  
English Medium School**

Mahatma Phule Road,  
Off Gokhale Road, Naupada,  
Thane (West) - 400 602  
Maharashtra, India

Tel. : +91-22-2542 1447  
E-mail : [akjsecondary@rediffmail.com](mailto:akjsecondary@rediffmail.com)  
Website : [www.vpmthane.org](http://www.vpmthane.org)

## **MOTTO**

Work hard and achieve success.  
Do not give up.

## **VISION**

To build confidence in our students so that they successfully meet their own goals in life and those set for them by their elders.

## **ABOUT THE SCHOOL**

Making a modest beginning, with limited classrooms and students, the school reaped rich rewards of the dedicated services of one and all concerned with the school. One success followed the other to enrich the school and the expectations of students, parents and one and all were effectively met.

The secondary section i.e. classes from Standards V to X are looked after by Head-Mistress Mrs. Kalindi Kolhatkar. Students are encouraged to participate in various exams, inter-school competitions and co-curricular activities. The students are grouped into four houses viz. Sun, Jupiter, Mercury and Venus. Various house-wise competitions are arranged and prizes are distributed accordingly.

The library is a treasure of knowledge. The school boasts of an excellent library which caters to the needs of students and teachers. All types of books, magazines and newspapers are available for reading. A collection of 13,000 books covering a wide variety of subjects makes the library a very important knowledge asset.

For the last 15 years, our Secondary School Exam (SSC) success rate is always 100 percent. Master Nachiket Thorat stood first in the Maharashtra State Board of Secondary and Higher Secondary Education in the year 2000.

Students are encouraged to appear for other exams such as National Talent Search (NTS), High School Scholarships, Maharashtra Talent Search (MTS), Mathematics exam conducted by Tilak and Ganit Adhyapak Mandal, History Talent Search, Hindi Rashtrabhasha, Institute for Promotion of mathematics, Sanskrit Scholarship, Unified Council, Elementary and Intermediate exams, Homi Bhabha Balvaidnyanik Science Foundation etc. Various activities such as annual socials, fun fair, sports day etc. are arranged for students.

Counselling and guest lectures are also arranged for students.

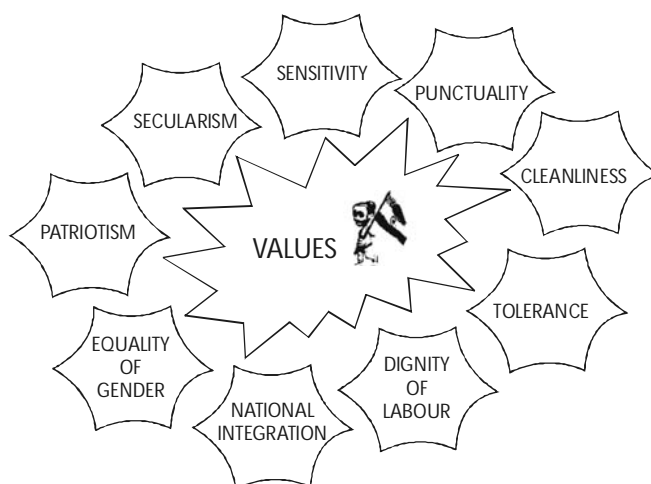
Teachers are encouraged to attend workshops, seminars and other school related academic and other relevant programmes.



There is an Alumni Association and the alumni take active part in arranging various activities for students' development.

Scouts and Guides activities are conducted for students from Standards VI to VIII. Various field trips, picnics and camps are arranged for students. Scouts and guides appear for Rajya Puraskar and Rashtrapati Puraskar examinations.

Values are inculcated to make our students good citizens in future.



Well equipped science laboratory and audio visual room, computer laboratory with Smart Boards, LCD and internet facilities are other avenues for teachers and students for professional growth and development.

'School Parliament' having different portfolios is formed every year for the smooth functioning of the day-to-day school activities.

Mathematics and Geography laboratories are other unique features of this school. This has opened up new vistas of learning which enable students with extended horizons of knowledge in the respective subjects. Subject-wise clubs viz. English, Music, Sports, Marathi, Science have enthused school students and teachers, alike, to take keen interest in a variety of curricular and co-curricular activities.

### **AFFILIATION**

The school is affiliated to Maharashtra State Board of Secondary and Higher Secondary Education, Mumbai.

### **INTERNATIONAL RECOGNITION**

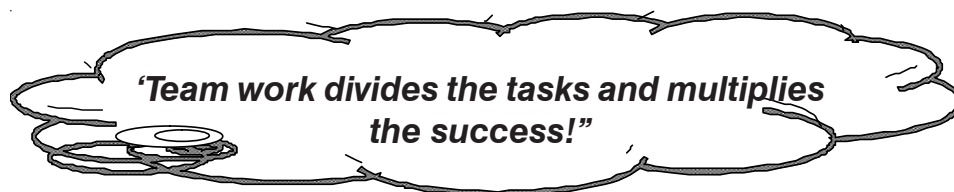
In August, 2007, our teachers Mrs. Aparna Bhole and Mrs. Purnima Sathe alongwith four students Ms. Nikita Shah, Ms. Amala Bhagvat, Ms. Niharika

Mungale and Mst. Sahil Kanekar visited Kunming. They participated in the China Adolescent Science and Technology innovation contest which was organised by China Association of Science and Technology. A project prepared by these four students of VPM's Sou. A.K. Joshi English Medium School on "Hydroponics", which was selected at National Level in India, was presented at the contest in China. This project was adjudged as the Best and the students were the proud recipients of the commendable achievement Award in the international participants category. Similarly, Mrs. Sharmila Nair, a teacher of Sou. A. K. Joshi English Medium School alongwith three students viz. Master Krunal Chaudhary, Master Siddharth Nair and Master Amogh Vaidhya, visited Urumqui (Northern China) in August, 2008. The students participated in a competition and presented their project on 'Re-use of Kitchen Water', which was adjudged as the Best project. Once again, VPM's Sou. A. K. Joshi English Medium School was the proud recipient of the commendable achievement Award in the international participants category.

In the primary section, we have developed a model of one class, one teacher. Learning processes enable improvement of memory of students and also bring clarity in their articulation. Students from Standards I to IV are made to recite Panini's Sutras. Like secondary section, house-wise activities are conducted and prizes are distributed accordingly. Students participate in various exams, overnight camps, picnics, educational visits, fancy dress competitions and other dimensions which keep the students energetic and enthused.

**"Learn while you play and play while you learn"** is the method followed in our pre-primary section. The tiny tots begin their schooling in a playful atmosphere where alphabets, numbers and various other basic concepts are introduced in a totally relaxed and stress free environment. Since experience is the best form of learning, field trips are arranged which enables students to interact with the real environment to gain hands-on experience. All our 'national days and festivals' are also celebrated with great enthusiasm. We ensure that our children enjoy their early child-hood without the burden of books and load of bags.

The results and successes achieved by the school are due to the strong support given by the management of Vidya Prasarak Mandal, Thane and, of course, our A.K. Joshi Parivar.

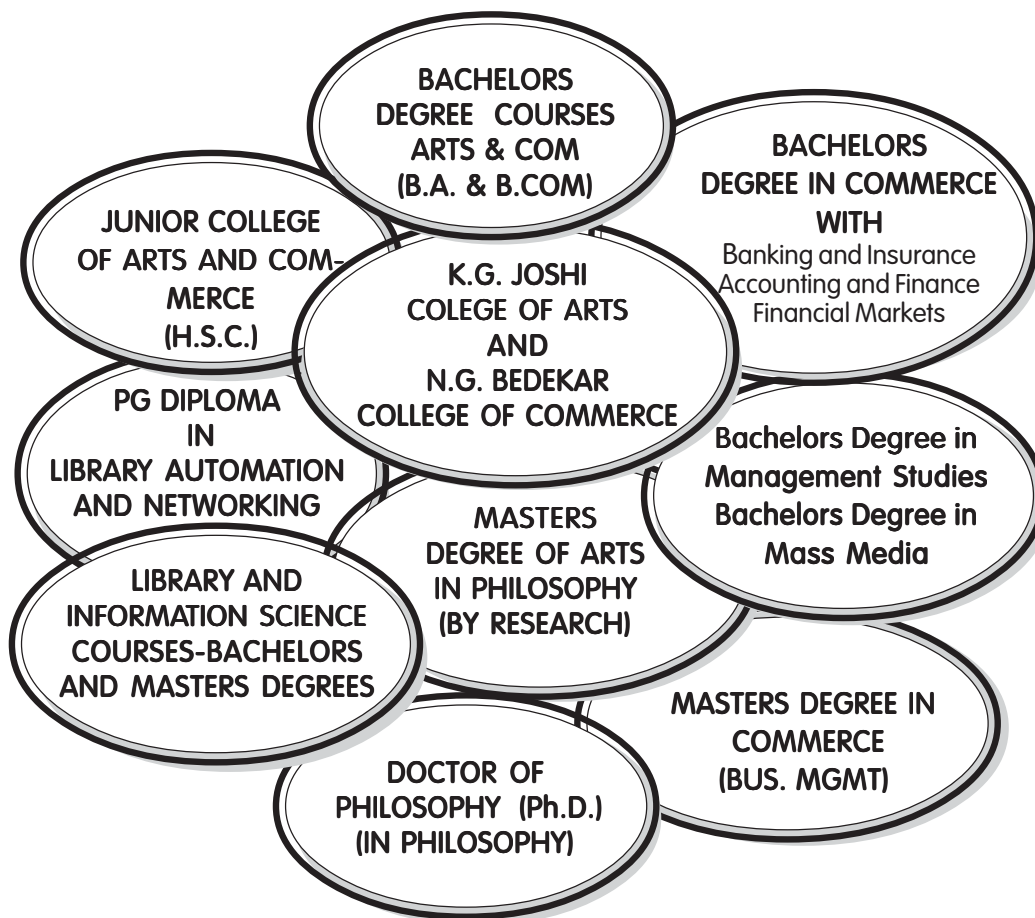


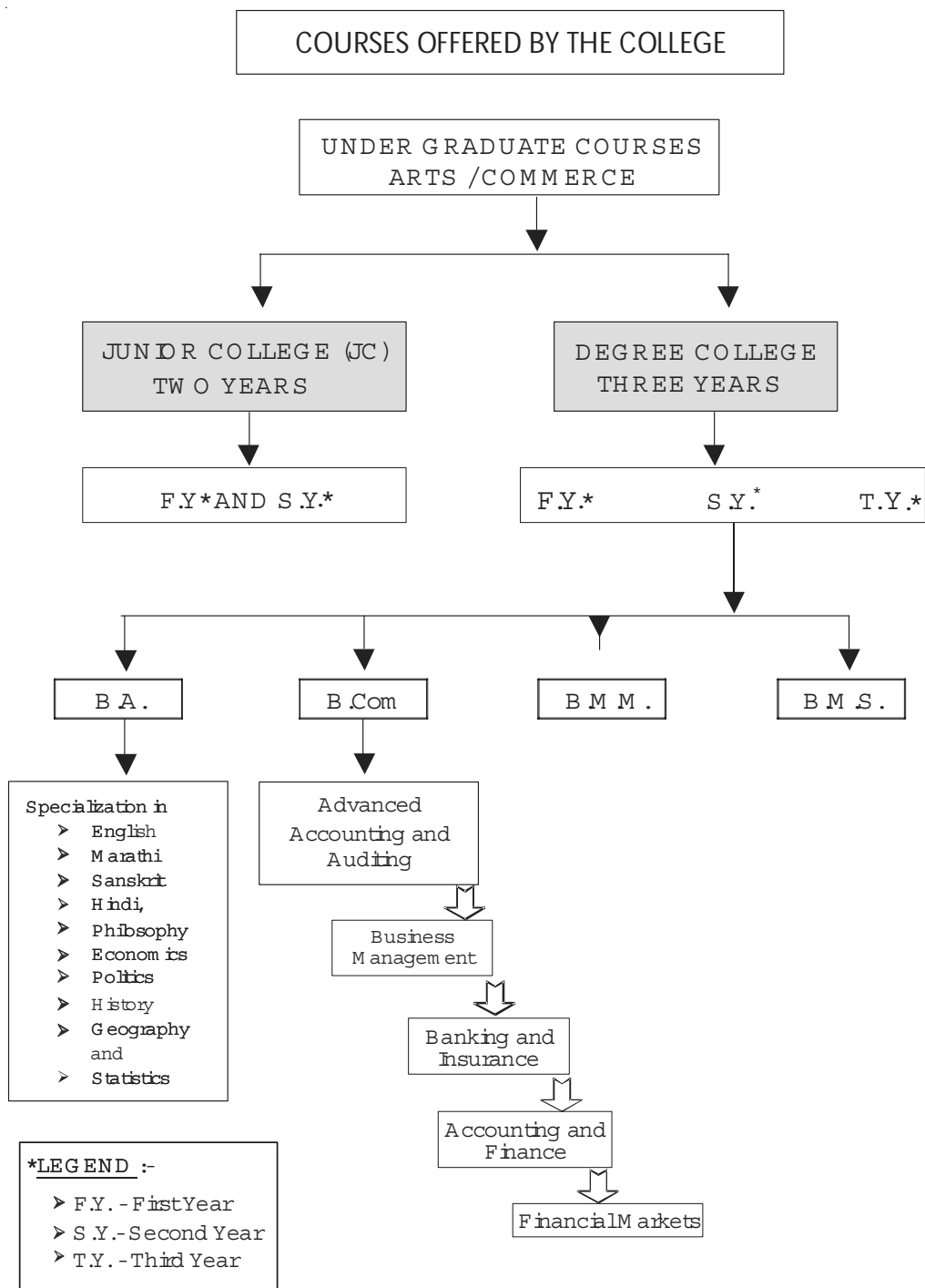


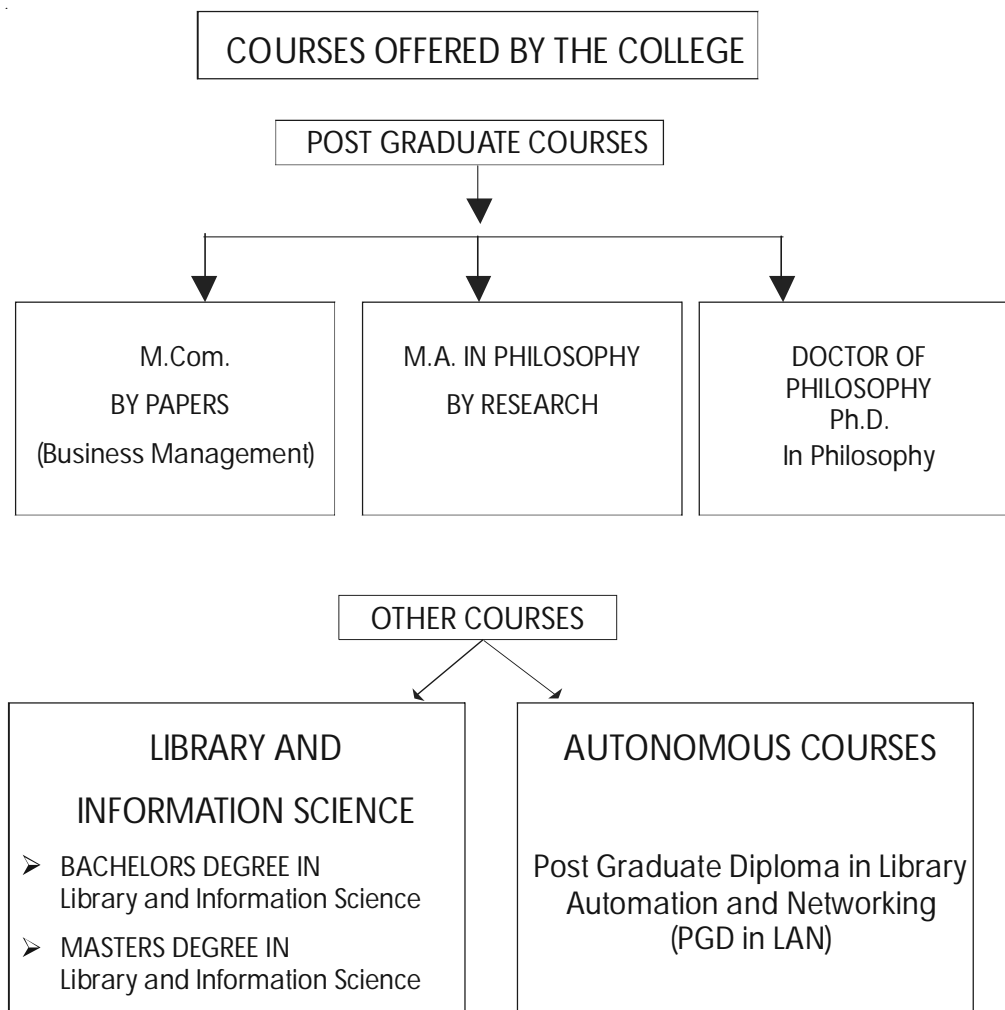
**K. G. Joshi College of Arts  
and  
N. G. Bedekar College of Commerce**

'Jnanadweepa', Thane College Campus,  
Chendani Bunder Road,  
Thane (West) - 400 601  
Maharashtra, India

Tel. : +91-22-2533 2412 / 2539 2072  
E-mail : [prinsas@vpmthane.org](mailto:prinsas@vpmthane.org)  
Website : [www.vpmthane.org](http://www.vpmthane.org)







## STUDENTS STRENGTH :- 5695

<b>GYMKHANA:-</b>	The college has a well-equipped gymkhana, and a functional gymnasium with a trained instructor. Separate gymnasium facilities are available for teaching, library and administrative staff.
<b>CULTURAL ACTIVITIES:-</b>	The college encourages and supports students in-house cultural festivals namely Gandharva Navrang and Chrysalis.
<b>TALENT ACADEMY:-</b>	A Talent Academy is constituted to discover and encourage the hidden talents of students.
<b>SCHOLAR'S ACADEMY:-</b>	Works towards encouraging scholars and motivating them towards excellence.
<b>CENTRE FOR RESEARCH IN PHILOSOPHY:-</b>	The centre provides opportunities to students to pursue Masters in Arts by Research and Doctorate of Philosophy Degrees (Ph.D. - in Philosophy) of the University of Mumbai.
<b>NATIONAL CADET CORPS (NCC):-</b>	The College has active Army and Naval wings for both males and females.
<b>NATIONAL SERVICE SCHEME (NSS):-</b>	Contribution towards society as a responsible citizen of society is made through active participation of students under the NSS scheme.
<b>WOMEN'S DEVELOPMENT CELL:-</b>	Active involvement of girl students and support system in managing stress.
<b>GENERATION DIALOGUE:-</b>	The College invites respected senior citizens who share their experience and guide the younger generation, the objective being to bridge the generation gap.
<b>VYAS SABHA</b>	The College has Vyas Sabha for teachers. All members of the teaching staff gather every week and discuss societal issues of relevance. Learning Sanskrit is also a part of the Vyas Sabha.

**SEMINARS, CONFERENCES AND WORKSHOPS**

<b>TITLE OF SEMINARS / CONFERENCES / WORKSHOPS</b>	<b>DATES</b>	<b>NATIONAL / STATE LEVEL</b>
Water Management Scenario - 2025	21 <sup>st</sup> January, 2005	National
Sanganak and Marathi	28 <sup>th</sup> January, 2006	State
Bio-Ethics	24 <sup>th</sup> -25 <sup>th</sup> January, 2007	National
Indian Philosophy: Its Relevance in 21 <sup>st</sup> Century	18 <sup>th</sup> –19 <sup>th</sup> January, 2008	National
Post Independence – Indian Literature	16 <sup>th</sup> January, 2009	National

**FORTHCOMING SEMINAR- (International)**

<b>TITLE OF SEMINAR</b>	<b>DATE</b>
Mind, Brain and Consciousness	14 <sup>th</sup> –15 <sup>th</sup> January 2010





## **B. N. Bandothkar College of Science**

'Jnanadweepa', Thane College Campus,  
Chendani Bunder Road,  
Thane (West) - 400 601  
Maharashtra, India

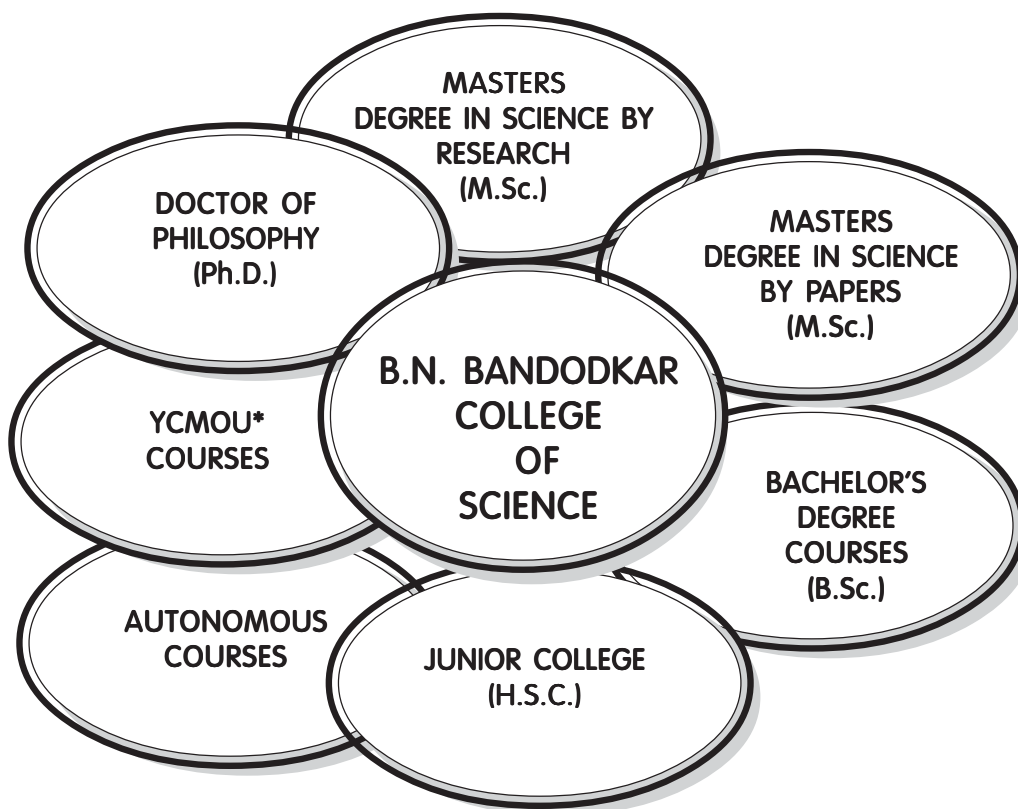
Tel. : +91-22-2533 7672 / 2533 6507 / 2540 1188  
E-mail : [prinbnb@vpmthane.org](mailto:prinbnb@vpmthane.org)  
Website : [www.vpmthane.org](http://www.vpmthane.org)

**VISION**

Imparting Quality Education in Science

**MISSION**

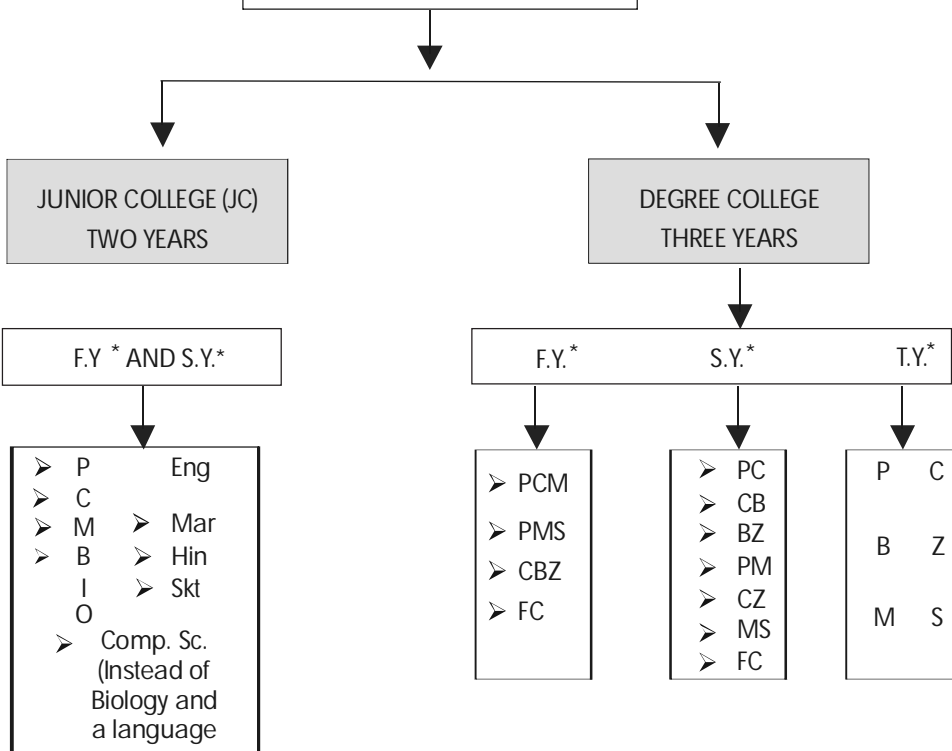
To mould students into rational thinkers, competent workers and socially aware citizens



LEGEND :- YCMOU\* - YASHWANTRAO CHAVAN MAHARASHTRA OPEN UNIVERSITY

COURSES OFFERED BY THE COLLEGE SCIENCE STREAM

UNDER GRADUATE COURSES

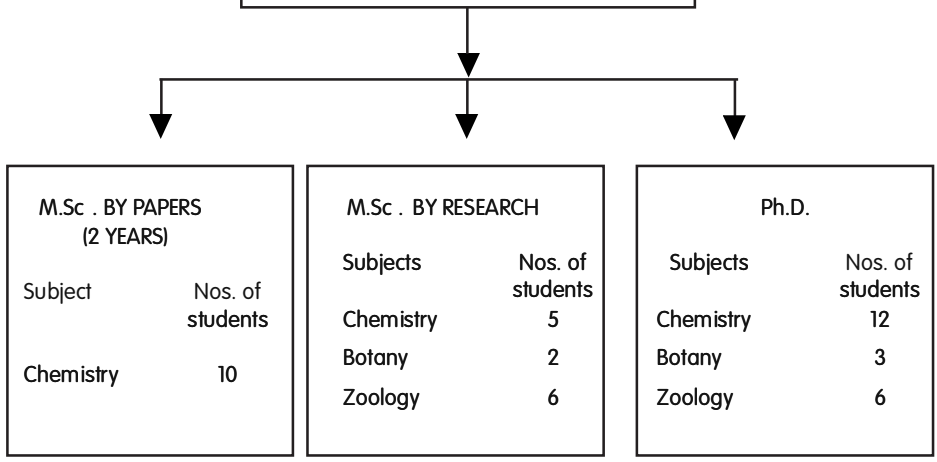


\* LEGEND:

- |                              |                  |                  |
|------------------------------|------------------|------------------|
| ❖ Physics (P)                | ❖ Chemistry (C)  | ❖ Botany (B)     |
| ❖ Mathematics (M)            | ❖ Zoology (Z)    | ❖ Statistics (S) |
| ❖ Biology (B)                | ❖ Marathi (M)    | ❖ Hindi (Hin)    |
| ❖ Computer Science (Comp. S) | ❖ Sanskrit (Skt) | ❖ English (Eng)  |
| ❖ Foundation Course (FC)     |                  |                  |
| ➤ F.Y. - First Year          |                  |                  |
| ➤ S.Y. - Second Year         |                  |                  |
| ➤ T.Y. - Third Year          |                  |                  |

**COURSES OFFERED BY THE COLLEGE- SCIENCE STREAM**

**UNDER GRADUATE COURSES**



**OTHER COURSES**

